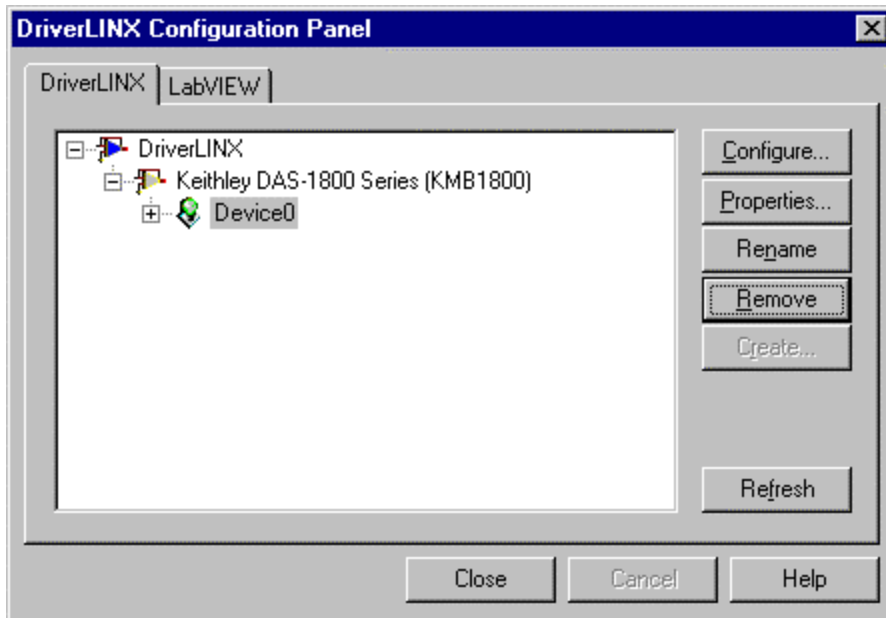


Keithley has a suite of VIs that makes use of the DriverLINX driver to interface to the plug-in board hardware. These VIs are compatible with LabVIEW 5.0 or higher. Board families that can make use of these VIs are: DAS-800, DAS-1700, DAS-1800, DAS-TC/B, DDA-08 or DDA-16, ISA PIO cards, or any KPCI or KPCMCIA multi function data acquisition card.

DriverLINX for the DAS-8 or DAS-16/DAS-1600 family of products is a much older implementation of DriverLINX and they cannot interface to these LabVIEW VIs. The design of these boards (in the days of DOS) does not include a board level FIFO for data buffering. The board's throughput specifications are unlikely to be sustainable in the Windows operating system. Software development halted some years ago. Keithley does not recommend these boards for new applications in the Windows operating system.

The LabVIEW VIs based upon DriverLINX will not make use of National Instruments' Measurement and Automation Explorer (MAX) or other hardware Wizards. These features of LabVIEW work only with their hardware. Instead, follow these easy steps:

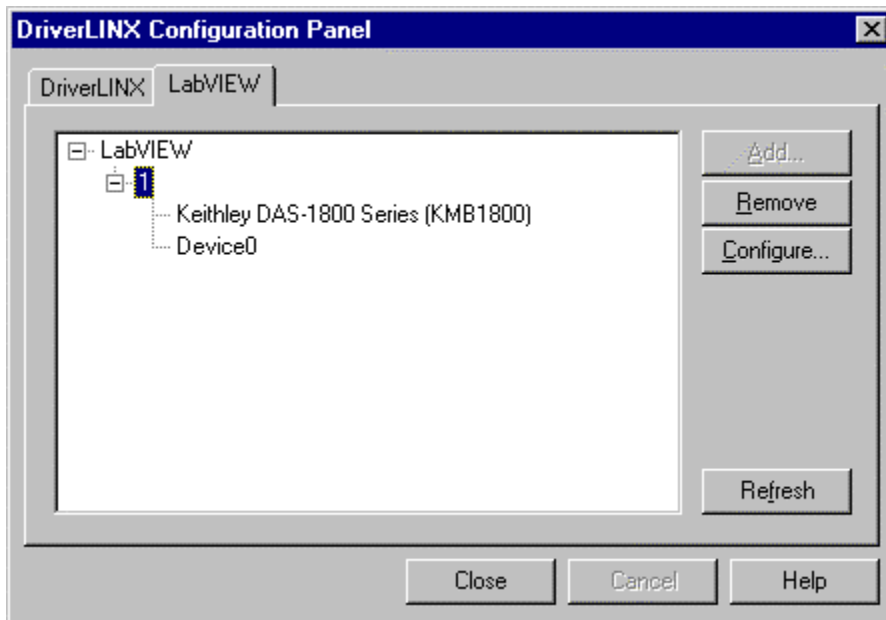
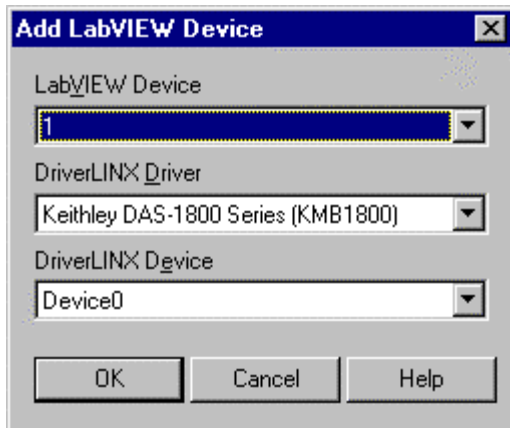
Step 1: Below is a screen shot of a successful installation of the DriverLINX driver for a board:



Notice the green colored bulb in front of the device number assignment (Device0). Notice also the LabVIEW tab.

Step 2: From the LabVIEW tab, click the Add button to bring up the dialog below. With the settings shown, the LabVIEW environment will use Device 1 to refer to the DriverLINX Device0 of the Keithley DAS-1800 Series. If more than one board was installed in the computer, then click the Add button again to create a second LabVIEW device number.

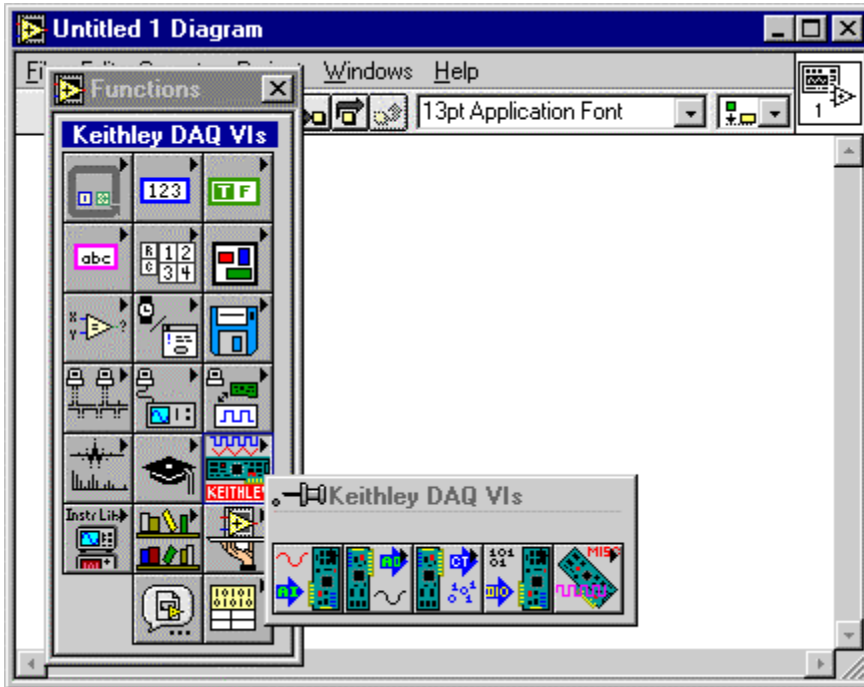
NOTE: LabVIEW device numbers start at 1 and higher.



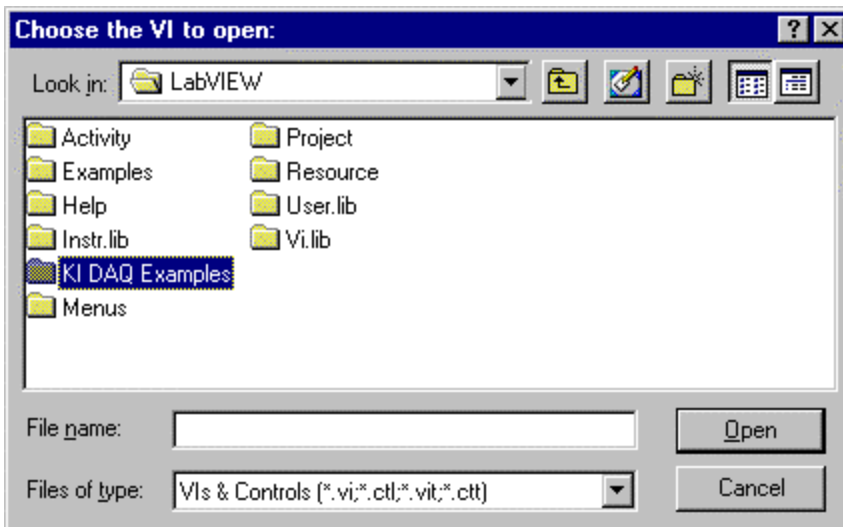
Step 3: Have LabVIEW 5.0 or higher already installed on your system and then install the LabVIEW support package from your DriverLINX CD or from web site download (dlinx4lv.exe). The current version of this is 1.0.3 (as of Sept 2002). You can know what version is installed on your system by looking in the log file: \\drvlinx4\system\drvlinx4.log. If the version from your CD is older than 1.0.3, download the package from the web site (appx 9 Meg).

Step 4: From LabVIEW, several resources will now be available:

- the Function Palette will have a set of Keithley DAQ VIs:



- a suite of example programs are installed in the LabVIEW directory structure in a folder called KI DAQ Examples:



As you can see below, an extensive library of examples are provided, one library for each subsystem your card might have: Analog Input, Analog Output, Counter/Timers, Digital I/O.

